

# Art



## Careers

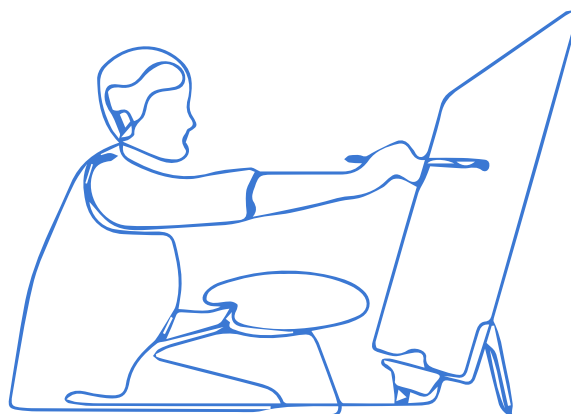
There is a huge range of careers to pursue in the arts from traditional areas such as architecture, graphic design, fashion, advertising, product design, museum/gallery curatorship and ceramicist; to newer disciplines such as web design, gaming design, or set design for TV/Film.

## About the course

The course is based around the development of understanding and skills and communication of ideas. This allows students to use a range of media throughout the year. Students work to an open ended question where they will explore a theme of their choice, finding their own artists and sourcing observational stimulus independently. Students will explore both observational work as well as abstract concepts and must show clear evidence of an ability to thoroughly research and develop a theme leading to meaningful outcomes.

Students are also required to submit a written diary to support the practical work.

There is also an Externally Set Task, set by the exam board which offers a choice of 8 questions to be used as a starting point. Students have around 12 weeks to produce a project during which students will have 15 hours supervised time during which they are required to produce a finished outcome, informed by their preparatory work. Students are also required to submit a written piece to support the practical work



## Entry Requirements

You will need at least a grade 5 in art and at least a grade 5 in either English language or literature due to the written content essay.

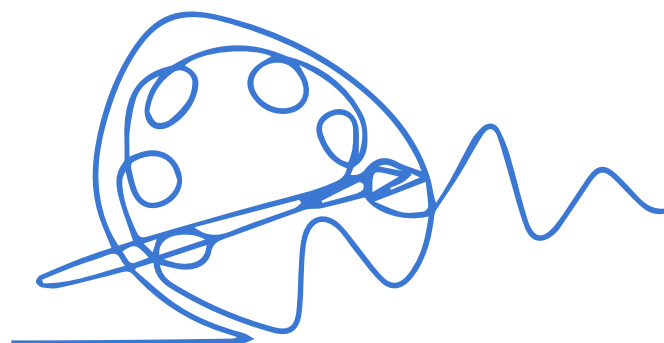
## Assessment

Assessment is made from:

60% Portfolio unit, made up of students own investigations on a topic of their choice and a body of work created over 7 months.

40% Externally Set Task. This is a unit set by the exam board. Students choose from a range of topics to explore and create a body of work on that theme. Students work on this unit for around 14 weeks.

There is also a written content of 1000-5000 words for each unit that supports students investigations



## Find Out More

For further information please contact [alice.robertson@whitleybayhighschool.org](mailto:alice.robertson@whitleybayhighschool.org)

